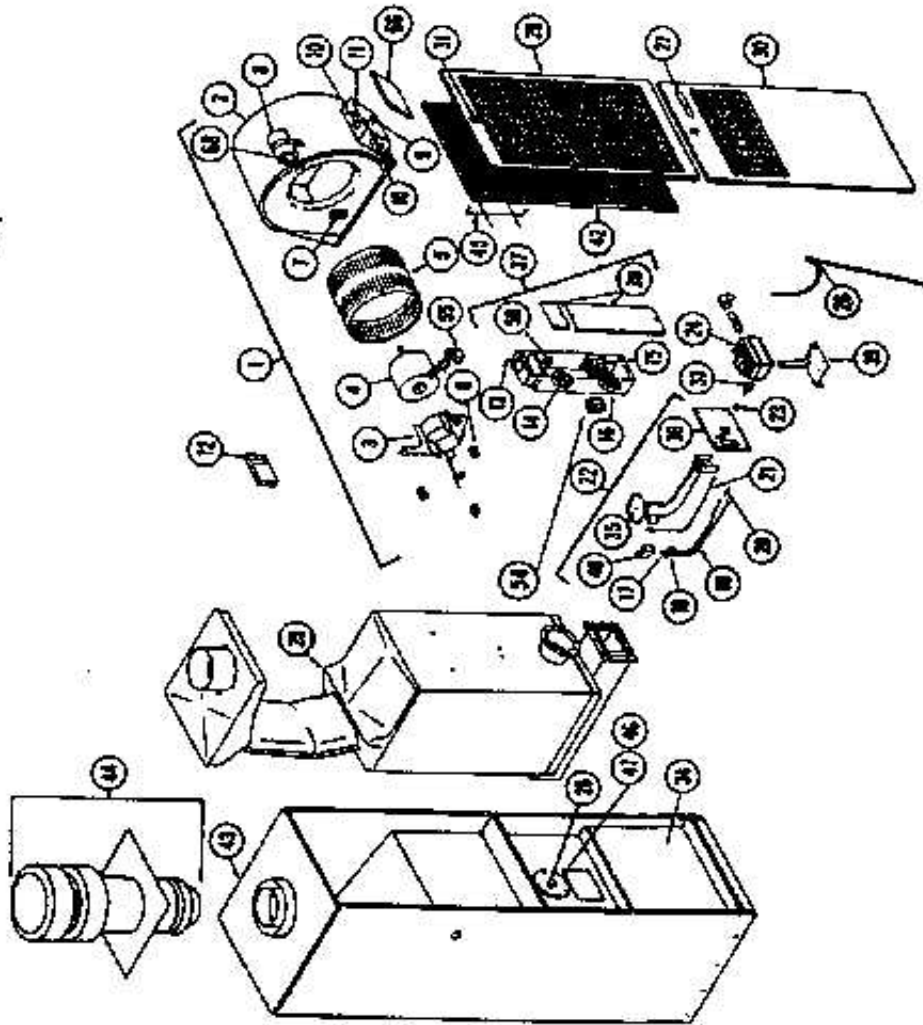


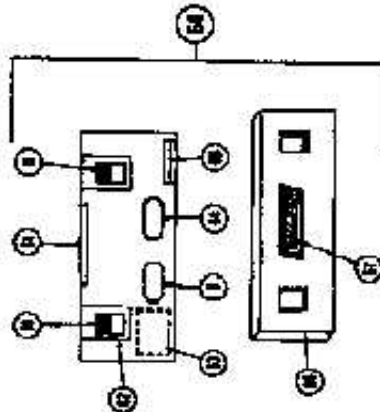
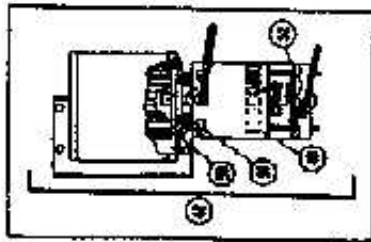
www.mhrv.com

# COLEMAN Series Presidential II

7656B, 7663B, 7670B, 7680B, 7700B



BOOSTER ASSEMBLY  
FOR 7700 ONLY



## 7656B, 7663B, 7670B, 7680B

Ref #	Part #	Description	# Req.	Models Used On
1-11	Blower Parts	See Blower Parts Table		
12	7656-3951 7670-3951	Thermostat (Adj - Set at .25 W-R#1030-370) Thermostat (Adj. - Set at .40 W-R#1030-339)	1	All
13	7660-3511	Switch (On-Off) Carling #MAAOA-BL	1	All
14	7660-3281 7700-3281	Fan Switch (Close 110 Open 90) Fan Switch (Close 120 Open 90)	1	7656B, 7663B 7670B, 7680B
15	7660C3501 2940A3541	Transformer (115/24V 40VA) Tranformer Basler BE112460001	1	All
16	7680-3591 7660-3591	Limit Switch (Lower 0-155 Close 135) Limit Switch (Lower 0-150 Close 130)	1	7656B, 7663B, 7680B 7670B
17	9850A0161	Pilot Spud	1	All
18	9966-0161	Pilot Spud	1	All
19	7656-1661 7660-1661	Pilot Tube (1/4 OD Steel W-R Valve) Pilot Tube (1/4 OD Steel G-C Valvel)	1	All
20	2631-3481	Thermocouple	1	All
21	2004-1561	Bleed Line (1/8 OD)	1	All
22	7656-6681 7660A6681	Burner Assy (Less W-R Gas Valve) Includes 17 thru 21, 35, 36 & 40 Burner Assy (Less G-C Gas Valve) Includes 17 thru 21, 35, 36 & 40)	1	All
23	-	See Orifice Chart For Size	1	All
24	7656-3261 7656-3561 7660-3261	Gas Valve (w/Bracket 24v .23 Amp W/R) Mounting Bracket (For G-C Valve Only) Gas Valve (24v .45 Amp G-C)	1	All
25	7656-5751 7660-5751 7670-5751 7680-5751	Heat Exchanger (with gaskets)	1	7656B 7663B 7670B 7680B
26	7660A3661	Cap & Rod (w/Sight Glass)	1	All
27	7670-3801	Coleman Emblem	1	All
29	7670-5231	Panel - Upper	1	All
30	7670A5241	Panel - Lower	1	All
31	7660-2301	Latch Assembly (Front Panel)	1	All
33	7660-1851	Spud Mount (Less Orifice)	1	All
34	7656-5201 7680-5201	Panel (Coil Cavity 19-13/16" SN#179000 & Above) Panel (Coil Cavity 19" SN#1278000 & Below)	1	All
35	7660-5141	Flame Spreader	1	All
36	7660-5101	Mounting Plate - Burner	1	All
37	7660D5401 7680B5401	Control Box Assy (Complete)	1	7656B, 7663B 7670B, 7680B
38	7660-1831	Covers (Control Box Upper & Lower)	1	All
39	7656-5111 7660-5111	Valve Bracket (W-R Valve) Valve Bracket (G-C Valve)	1	All
40	7660A1461	Pilot Shield	1	All
42	7660-3401 7670-3401	Filter (19-3/8 x 35-3/4 x 1/4) Filter (19-3/8 x 35-3/4 x 1/4 w/hole)	1	All (Heating Blowers) All (A/C) Blowers)
43	7670-1041	Casing Top	1	All
44	-	Roof Stack	1	All
45	7670-3451	Filter Retainer (3/Pkg)	1	All
46	7660-5471	Door Plate (w/Gasket)	1	All
47	7660-317	Gasket	1	All
55	7680-5771	Plug & Wire Assy (Motor)	1	All
56	7680-5761	Cap & Wire Assy (Control Box)	1	All

7700B

Ref #	Part #	Description	# Req.	Models Used On
1-11	Blower Parts	See Blower Parts Table		
12	7670-3951	Thermostat (Adj. - W-R 2-wire)	1	All
13	7660-3511	Switch (On-Off)	1	All
14	7700-3281	Fan Switch (Close 120 Open 90)	1	All
15	7660C3501	Transformer (115/24V 40VA)	1	All
16	7700-3591	Limit Switch (Lower-65 Close 135)	1	All
17	9850A0161	Pilot Spud G-C Valve	1	All
18	9966-0161	Pilot Spud G-C Valve	1	All
19	7656-1661 7660-1661	Pilot Tube (1/4 OD Steel W-R Valve) Pilot Tube (1/4 OD Steel G-C Valve)	1	All
20	2631-3471	Thermocouple	1	All
21	2004-1561	Bleed Line (1/8 OD)	1	All
22	7656-6681 7700-6681	Burner Assy (Less W-R Gas Valve) Includes 17 thru 21, 35, 36 & 40 Burner Assy (Less G-C Gas Valve) Includes 17 thru 21, 35, 36 & 40	1	All
23	9551-1821 9951-1101	Nat Orifice .182 LP Orifice .110	1	All
24	7700-3461 7700-3561 7700-3261	Gas Valve (w/Bracket 24v .23 Amp W/R) Mounting Bracket (For G-C Valve Only) Gas Valve (24v .45 Amp G-C)	1	All
25	7700-5571	Heat Exchanger (with gaskets)	1	All
26	7680-5701	Cap & Rod (w/Sight Glass)	1	All
27	7670-3801	Coleman Emblem	1	All
29	7670-5231	Panel - Upper	1	All
30	7670A5241	Panel - Lower	1	All
31	7660-2301	Latch Assembly (Front Panel)	1	All
33	7700-1851	Spud Mount (Less Orifice)	1	All
34	7656-5201 7680-5201	Panel (Coil Cavity 19-13/16" SN#179000 & Above) Panel (Coil Cavity 19" SN#1278000 & Below)	1	All
35	7660-5141	Flame Spreader	1	All
36	7660-5101	Mounting Plate - Burner	1	All
37	7700C540	Control Box Assy (Complete)	1	All
38	7660-1831	Covers (Control Box Upper & Lower)	1	All
39	7656-5111 7660-5111	Valve Bracket (W-R Valve) Valve Bracket (G-C Valve)	1	All
40	7660A1461	Pilot Shield	1	All
42	7660-3401 7670-3401	Filter (19-3/8 x 35-3/4 x 1/4) Filter (19-3/8 x 35-3/4 x 1/4 w/hole)	1	All (Heating Blowers) All (A/C Blowers)
43	7670-1041	Casing Top	1	All
44	-	Roof Stack	1	All
45	7670-3451	Filter Retainer (3/Pkg)	1	All
46	7660-5471	Door Plate (w/Gasket)	1	All
47	7660-317	Gasket	1	All
48	7995-6451	Booster Assy (Includes 48 thru 52)	1	All
49	7700A3149	Booster Motor 3000 RPM	1	All
50	8865-3611	Impellor (3-13/16 x 1-7/8 x 3/8)	1	All
51	8865B1281	Motor Mount (Rubber 4/Pkg)	1	All
52	7700-2751	Snap Switch	1	All
54	8665-5701	Booster Relay	1	All
55	7680-5771	Plug & Wire Assy (Motor)	1	All
56	7680-5761	Cap & Wire Assy (Control Box)	1	All

# Blower Parts - Heat Only

Ref #	Part #	Description	# Req.	Models Used On
1	7660B590 7670B590 7680B590 7700A590	Blower	1	7656B, 7663B 7670B 7680B 7700B
2	7660-537 7670-537 7700A538	Scroll	1	7656B, 7663B 7670B, 7680B 7700B
3	None 7670-5391 8680-5391	Motor Clamp	1	7656B, 7663B 7670B, 7680B 7700B
4	7660A3119 7670A3119 7700A3119	Motor 1/10 HP 860 RPM Motor 1/6 HP 860 RPM Motor 1/4 HP 1000 RPM	1	7656B, 7663B 7670B, 7680B 7700B
5	7660-3871 1472-2751	Impellor 7-1/8 x 9-15/16 x 1/2 Impellor 7-13/16 x 10-3/4 x 1/2	1	7656B, 7663B 7670B, 7680B, 7700B
6	7670-3551	Motor Mount (3/Pkg)	1	All
7	7660-3591 7680-3791	Limit Switch - Upper (Close 130 Open 150) Limit Switch - Upper (Close 120 Open 140)	1	7656B, 7663B, 7670B 7680B, 7700B
8	x	Capacitor	None	
9	x	Relay	None	
10	x	Switch	None	
11	x	Knob	None	

## Burner Orifice Chart #23

	Nat	LP	# Req.	Models Used On
23	9951-1361	9951-0821	1	7656B
23	9951-1441	9951-0861	1	7663B
23	9951-1571	9951-0891	1	7670B
23	9951-1661	9951-0961	1	7680B

[www.mhrv.com](http://www.mhrv.com)

COLEMAN Series Presidential II

# Blower Parts - A/C

Ref #	Part #	Description	# Req.	Models Used On
1	7660B6931 7670B6921 7670B6931	Blower 31M BTU-46M BTU Systems Blower 31M BTU-36M BTU Systems Blower 40M BTU-46M BTU Systems	1	7656B, 7663B 7670B, 7680B 7700B
2	7670-552 7670-637 7670-552	Scroll	1	7656B, 7663B 7670B, 7680B 7700B
3	6213-1841 8680-5391 6213-1841	Motor Clamp	1	7656B, 7663B 7670B, 7680B 7700B
4	7670-3239 7680-3239 7670-3239	Motor 1/2 HP 1025 RPM 6.4 AMP Motor 1/2 HP 1025 RPM 6.4 AMP Motor 1/2 HP 1025 RPM 6.4 AMP	1	7656B, 7663B 7670B, 7680B 7700B
5	7660-3601 7670-3871 7660-3601	Impellor 7-3/16 x 12-5/8 x 1/2 Impellor 7-3/16 x 10-3/4 x 1/2 Impellor 7-3/16 x 10 3/4 x 1/2	1	7656B, 7663B 7670B, 7680B 7700B
6	7670-3551	Motor Mount (3/Pkg)	1	7670B, 7680B
7	7660-3591 7680-3791	Limit Switch - Upper (Close 130 Open 150) Limit Switch - Upper (Close 120 Open 140)	1	7656B, 7663B, 7670B 7680B, 7700B
8	1499-5071	Capacitor 7.5 Mfd 370W	1	All
9	6313-2281	Blower Relay	1	7670B, 7680B, 7700B
10	710A5181 7670-3531	Switch (Cont Auto)	1	7656B, 7663B 7670B, 7680B, 7700B
11	7670-3521	Switch - Heat & Cool	1	7670B, 7680B, 7700B
60	766A563 7670B545 7670B541	Control Box - Complete	1	7656B, 7660B 7670B, 7680B 7700B
62	7670-109	Switch Bracket	1	7670B, 7680B, 7700B
63	None	Transfomer	None	x
64	7670-3081	Reversing Relay	1	7670B, 7680B, 7700B
65	7670-5331	Resistor Assy 12W 150 Ohm	1	7670B, 7680B, 7700B
66	7660-291 7670-542	Lid (Control Box)	1	7656B, 7660B 7670B, 7680B, 7700B
67	1970-599 7670-3811	Blower Decal	1	7656B, 7660B 7670B, 7680B, 7700B
68	2632-180	Term Cover (Cap)	1	All

[www.mhrv.com](http://www.mhrv.com)

COLEMAN Series Presidential II